

# MODEL RC2263BE

## AIR OPERATED POOL-TO-SPA CONTROL

IN RAINPROOF(TYPE 3R) ENCLOSURE SUITABLE FOR POOL/SPA APPLICATIONS AND FOR DIRECT CONNECTION OF UNDERWATER LIGHTS.

100 AMP. 120/240 VOLT OR 120/208 VOLT SINGLE PHASE (THREE WIRE) AC.

FILTER PUMP: 1HP-120V., 2 HP-240V.; AIR BLOWER: 1HP-120V., 2 HP-240V.

VALVE ACTUATOR: 24V. UP TO 3 ACTUATORS

*The short circuit rating of this panel is 10000 symmetrical amperes.*



### CAUTION, RISK OF ELECTRIC SHOCK

Install at least 5 ft. (3 meters for Canadian installations) from inside edge of pool/spa. Mount at least 1 ft. (30 cm) above ground with arrows up.

...do not permit children to operate this control or use the Pool/Spa unless they are closely supervised at all times.

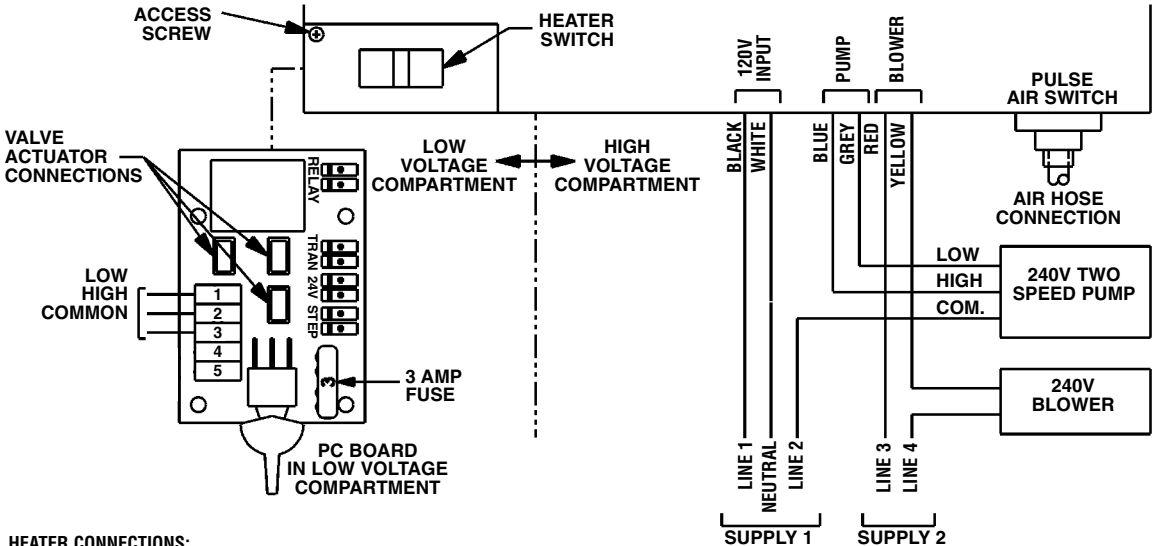
...test GROUND FAULT protection regularly. If it fails to reset, DO NOT USE THE POOL or SPA!

...always disconnect electricity before servicing this control or the equipment connected to it. THIS CONTROL IS NOT TO BE USED AS A POWER DISCONNECT.

EQUIPMENT	SEQUENCE			
	1	2	3	4
<b>FILTER PUMP</b>				
ONE SPEED	TIMER ON/OFF	ON	ON	OFF
LOW/HIGH SPEED	TIMER LOW/OFF	HIGH	HIGH	LOW
BLOWER	OFF	OFF	ON	ON
VALVES	SET TO POOL CIRCULATION		SET TO SPA CIRCULATION	
HEATER	POOL TEMP		SPA TEMPERATURE SETTING	

This Air Control is designed to control a pump, (single or two speed, 120 V. or 240V.), and a blower (120 V. or 240 V.) safely, without electricity at the spa side. Timer automatically controls pump (LO speed, if two speed pump) for desired filtration cycle. Each time pressure is applied to the remote air button, the pump and/or the blower will operate sequentially as shown in the table.

### IMPORTANT: NEUTRAL MUST BE CONNECTED TO WHITE LEAD.



#### HEATER CONNECTIONS:

**SINGLE THERMOSTAT:** Connect two 18 gauge wires in **SERIES** with heater toggle switch. Install

**JUMPER** between terminals 1 and 2. Place heater switch in **ON** position.

**DUAL THERMOSTAT:** Connect three 18 gauge wires in **PARALLEL** with heater toggle switch. Connect center post (COMMON) to term. 3, LOW to term. 1 and HIGH to term. 2. Place heater switch in **OFF** position.

For single speed pump and/or 120 volt equipment, follow wiring above except:

**240 V. Single Speed Pump** - Connect **both BLUE and GRAY** leads to **LOAD 1** of pump.

**120 V. Two Speed Pump** - Connect **NEUTRAL** to **WHITE** lead **and** **COMMON** of pump.

**120 V. Single Speed Pump** - Connect **NEUTRAL** to **WHITE** lead **and** pump **NEUTRAL**. Connect **both BLUE and GRAY** leads to pump **LOAD** terminal.

**120 V. Blower**-Connect **NEUTRAL** to blower **NEUTRAL**.

**INTERMATIC INCORPORATED**  
SPRING GROVE, ILLINOIS 60081-9698

158AS11128